

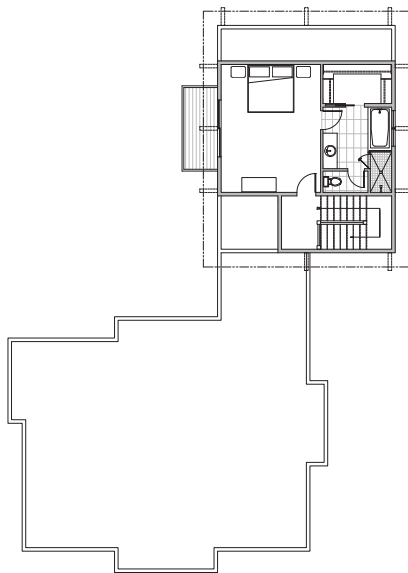


VICTORY RANCH

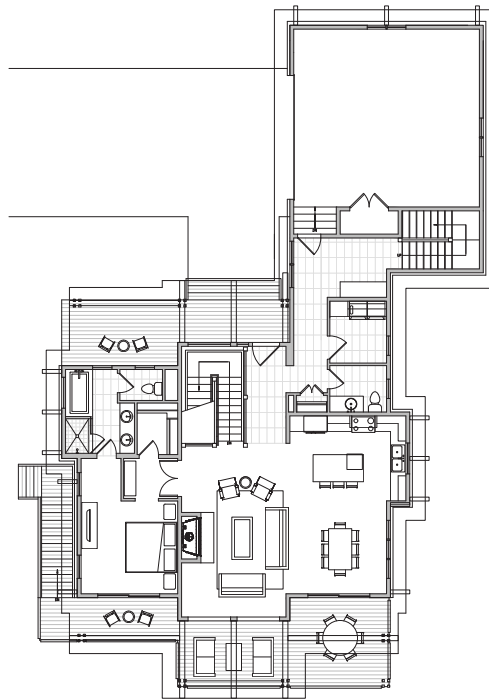
# THE WILLOW

FLOORPLAN

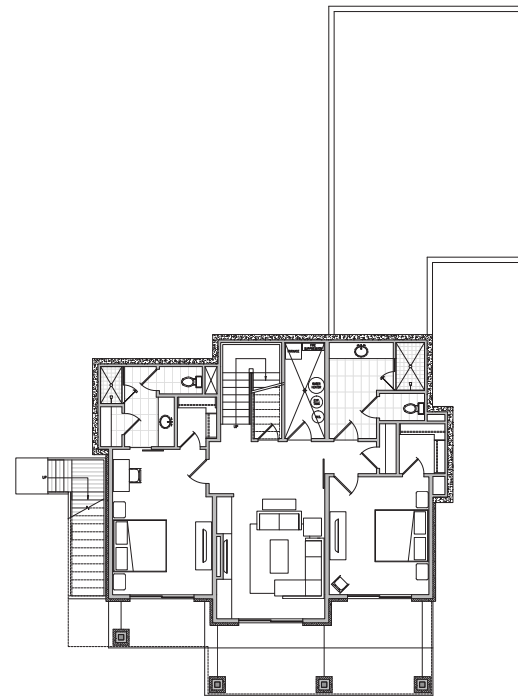
Four Bedrooms  
Four-and-a-half Baths  
Total Liveable Space: 3,614 S.F.



*UPPER LEVEL*  
Indoor Living: 568 S.F.



*MAIN LEVEL*  
Indoor Living: 1,661 S.F.



*LOWER LEVEL*  
Indoor Living: 1,385 S.F.  
*\*Option to convert living area to fifth bedroom*

Floor plans are subject to change without notice and are for presentation purposes only as they are not to scale. All dimensions and square footages are approximate and may vary due to uniqueness of the building design and congaration and no representation is made as the accuracy of such figures. Each office is independently owned and operated

Summit | Sotheby's  
INTERNATIONAL REALTY